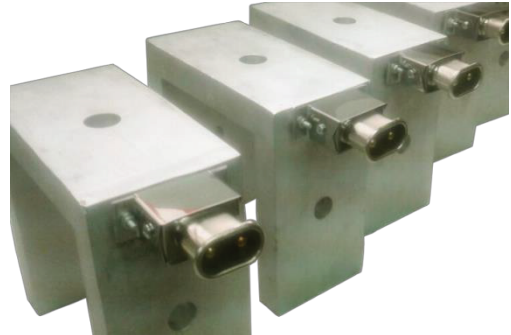


## CAST IN HEATERS

### Cast in Heaters

Casting a heating element increases its heat surface while it is possible to adapt the element to various applications. Contact us for the development of your product.



### Air Cooled cast alloy heaters

Finned Cast in heaters are most often fitted on extruder barrels under cowls. Centrifugal fans can be used to blow air between the fins to offer precise temperature control.



### Water cooled - Cast Alloy Heater Coolers

Cast alloy Heater cooler combinations are used where water is required to control processing temperature. Cooling jackets / mandrels are also available without a cast in element. Cooling tubes are available in a wide range of dimensions and materials.

### Terminations

Cast in heaters are terminated according to customer requirements. We also offer a broad range of electrical and cooling terminations.



### Technical specifications

<b>Dimensions</b>	Practically all shapes and dimensions can be manufactured	
<b>Max Specific power (W/cm<sup>2</sup>)</b>	Aluminium	6.2w/cm <sup>2</sup>
	Aluminium-Bronze	7.75w/cm <sup>2</sup>
<b>Voltage</b>	500V	
<b>Max working temperature</b>	Aluminium	400°C
	Aluminium-Bronze	550°C
<b>Tolerance</b>	Power +/- 5% +/- 0.13mm on finished surfaces	