

## Nozzle band heaters



# Model brass



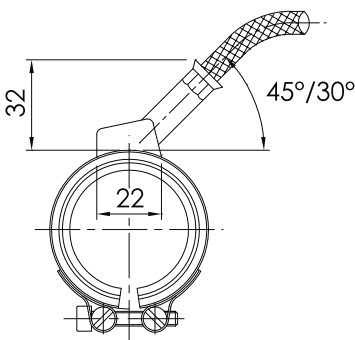
Standard with axial exit 45° (30° axial optional)  
Flexible bipolar cable + earth length 1000mm

## How to order

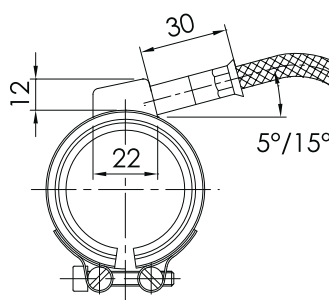
Application: .....  
 + article number (if known): .....  
 + Ø: .....  
 + Width: .....  
 + Wattage: .....  
 + Voltage: .....  
 + Lead length: .....  
 + Exit: .....  
 + Quantity: .....

# Terminal

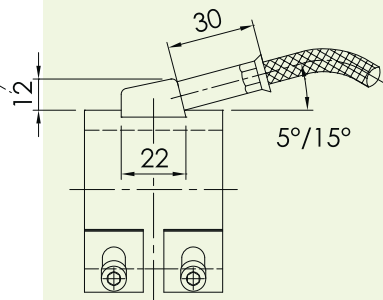
Tangential exit 30°/45°



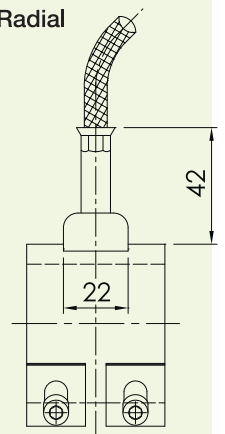
Tangential 5°/15°



Axial 5°/ 15°



Radial



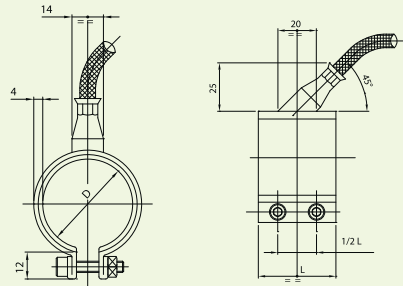
## Technical features

HSCO nozzle band heaters are usually employed when there are no space limit and dangers coming from the plastic corrosive action. They are also hermetically sealed from liquid plastic.

- | Specific wattage up to 6W/cm<sup>2</sup>
- | Working temperature 300/320°C
- | Available, upon request with built in thermocouple FeCU Ni (type J)
- | Max diameter ØD 110 mm, max width L 60 mm
- | Feeding lead length over 1000 [mm], upon request
- | Standard model with axial exit 45°
  
- | Different voltage and wattage upon request
- | Available upon request, execution with hole and threaded connector / cap nut for thermocouple ( see pag. 12 )

### Material

- | Brass tube
- | Ni-Cr 80/20 wire
- | Continuous mica insulations
- | Flexible bipolar feeding lead + earth wire
- | Ni bore insulated in PTFE with protective metal



## Nozzle Band With Coil Heater



### How to order

Model  
Application: .....  
+ (if known): .....  
+ Ø: .....  
+ Width: .....  
+ Wattage: .....  
+ Voltage: .....  
+ Lead length: .....  
+ Exit: .....  
+ Quantity: .....

### Technical features

nozzle band heaters are the confirmation in this field of our step forward to the future.

In fact, the technical features of these new heaters are better than the ones commonly used. Built with a rectangular tube (mm **4 x 2.2** ), they give an excellent guarantee of mechanical resistance against impacts and knocks as well as safety when using tools during maintenance operations.

nozzle band heaters are totally protected from the plastic corrosive action and are hermetically sealed from liquid plastic.

- | Stainless steel tube mm **4 x 2.2**
- | Cold end 65 mm
- | Specific wattage up to max. 15 W/cm<sup>2</sup>
- | Working temperature max **500** C
- | Available, upon request, with built-in thermo couple Fe/Co (tipo J) oppure NiCrNi (K)
- | Min. diameter ØD 20 mm, max. diameter ØD 100 mm
  
- | Min. bending radius 10 mm
- | Feeding lead lenght over 1000 mm, upon request
- | Standard model with axial exit 45°
- | Available, upon request, radial exit, or tangential exit 45° or 5°, or axial exit 5° or 30°  
( vedere pag. 17 )
- | Standard feeding voltage 230 V
- | Available, upon request, different voltages up to max 440 V

### Material

- | CrNi-steel tube
- | Ni-Cr 80/20 wire
- | Highly compressed MgO insulation
- | Flexible bipolar feeding lead + earth wire
- | Teflon insulated nickel conductors, with metal braiding protection
- | Stainless steel clamping band